

Waukesha Metro Transit Facts



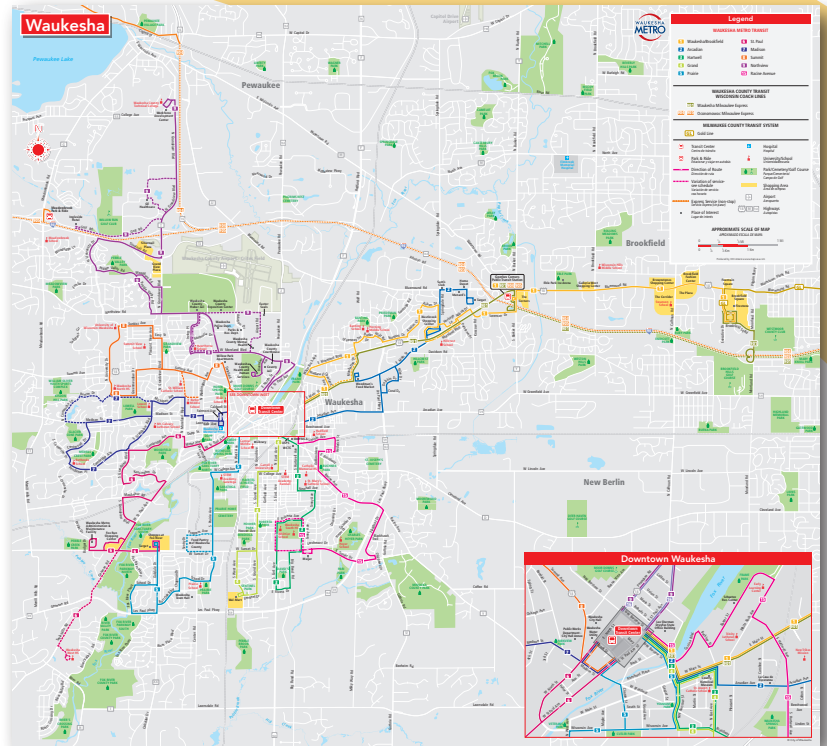
The City of Waukesha Metro buses operate seven days a week, with 10 routes on weekdays, 7 routes on Saturdays and 5 routes on Sundays.

Metro's goal is to provide quality cost-efficient transportation to the Waukesha Community.

Metro is privately managed and its employees work for a private management firm. The Transit Manager, who oversees Metro, is the lone full time public employee.

Continued Increase in Paratransit Trips

Waukesha Metrolift, the City of Waukesha's paratransit service, had a 2.7% increase in ridership in 2019 after a 11.1% increase in 2018. In addition, efficiency of trips has increased by nearly 40% since 2016.



2019 Statistics

	Fixed Route	Paratransit
Trips Provided	577,696	11,063
Trips/Revenue Hour	11.15	2.33

62.8%
work trips
(362,793)

12.4%
school trips
(71,634)

12.5%
shopping trips
(72,212)

12.3%
medical and other trips
(71,057)

Transit Systems in Wisconsin generate a

3 to 1 return
on tax dollar investment



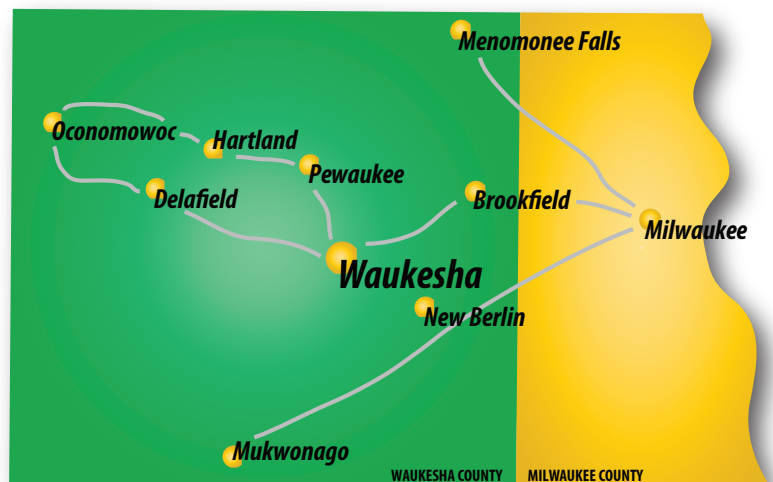
WAUKESHA METRO TRANSIT
Brian Engelking, Transit Manager
2311 Badger Drive
Waukesha, WI 53188
262.524.3634
bengelki@waukesha-wi.gov
www.waukeshametro.org

Waukesha County Transit Facts

Waukesha County Transit consists of 7 routes, 5 of which are commuter routes serving many communities throughout Waukesha County with weekday service to downtown Milwaukee. Some routes also serve the UW-Milwaukee campus. Local service is available along Bluemound Rd. in Brookfield. The system includes paratransit service along the I-94 Corridor. The vast majority of passengers ride Waukesha County Transit to work.



Communities Served by Waukesha County Transit



Bluemound Road Service

The Gold Line and Route 1 provided over 300,000 trips to the ever-expanding Bluemound Road area in 2019. These highly productive routes operate seven days a week bringing employees and consumers to businesses in this area.

2019 Statistics

	Fixed Route	Paratransit
Trips Provided	426,616	2,491
Trips/Revenue Hour	16.26	1.73

Transit Systems in Wisconsin generate a

3 to 1 return
on tax dollar investment

